

**Anti-Med11 (*S. cerevisiae*) antibody, rabbit polyclonal**

62-030 100 ug,

**Storage:** Shipped at 4°C and stored at -20°C

**Immunogen:** Recombinant His-tagged Med11 protein (1-132) produced in *E. coli*

**Reactivity:** Reacts with *S. cerevisiae* Med11. Not tested with other species.

**Applications:** Western blotting (1/100-1/200). Not tested for other applications.

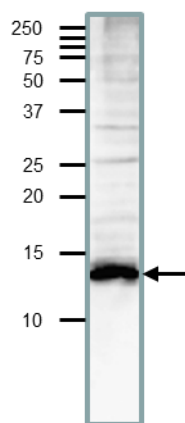
**Form:** Protein A affinity purified IgG, 1.0 mg/ml in PBS, 50% glycerol

**Background:** Component of the Mediator complex, a coactivator involved in the regulated transcription of nearly all RNA polymerase II-dependent genes. The Mediator complex is recruited to promoters by direct interactions with regulatory proteins and serves for the assembly of a functional preinitiation complex (PIC) with RNA polymerase II and the general transcription factors. The essential MED11/22 heterodimer specifically functions in promoting stable PIC formation

**Data Link** UniProt [Q99278](#) (MED11\_YEAST), SGD [S000004718](#). MED11.

**Reference:** This antibody was described and used in the following publication.

Takahashi H, Kasahara K, Kokubo T. *Saccharomyces cerevisiae* Med9 comprises two functionally distinct domains that play different roles in transcriptional regulation. [Genes Cells](#). 2009 Jan;14(1):53-67.



**Fig. Detection of endogenous Med11 by western blotting in whole cell extract of *S. cerevisiae*,**

The antibody was used at at 1/200 dilution. Blotting was done with wet system after electrophoresis on 15% gel at 15 v overnight. Molecular mass is 13.5 kDa.